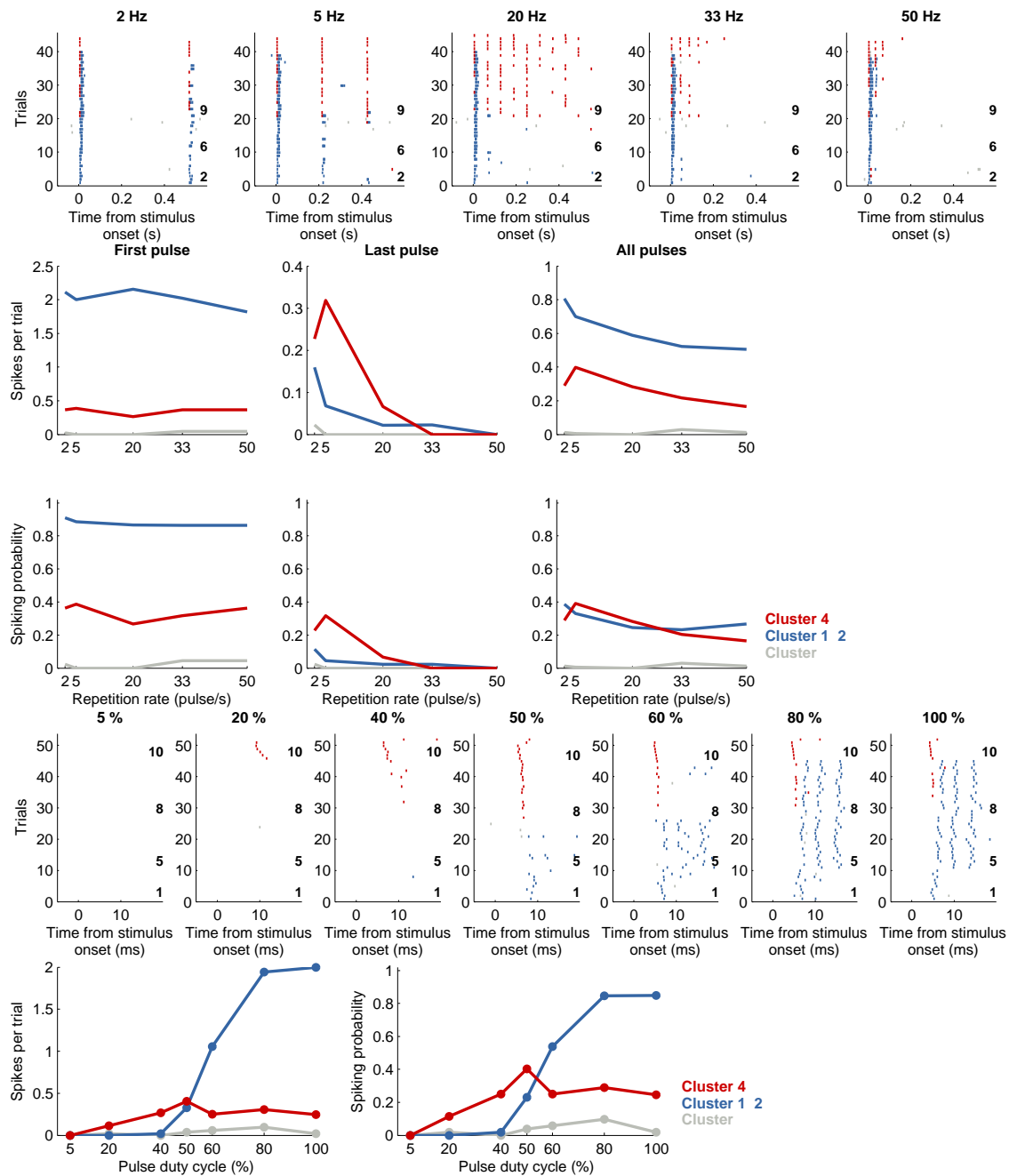


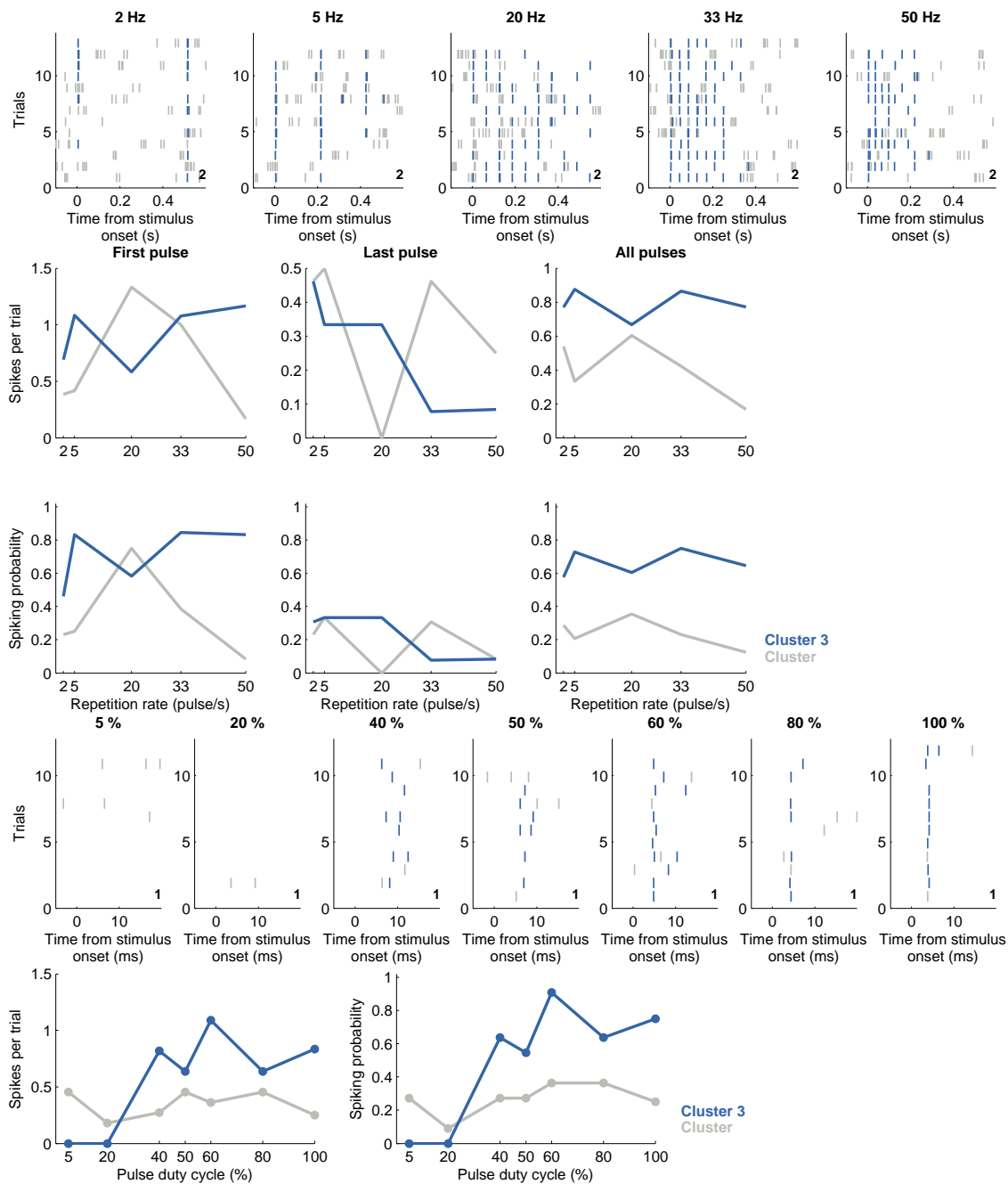
Notes: KlustaKwik clustering based on high-pass (900 Hz) filtered waveforms.

20080130-S185-001_summary_rasters.pdf



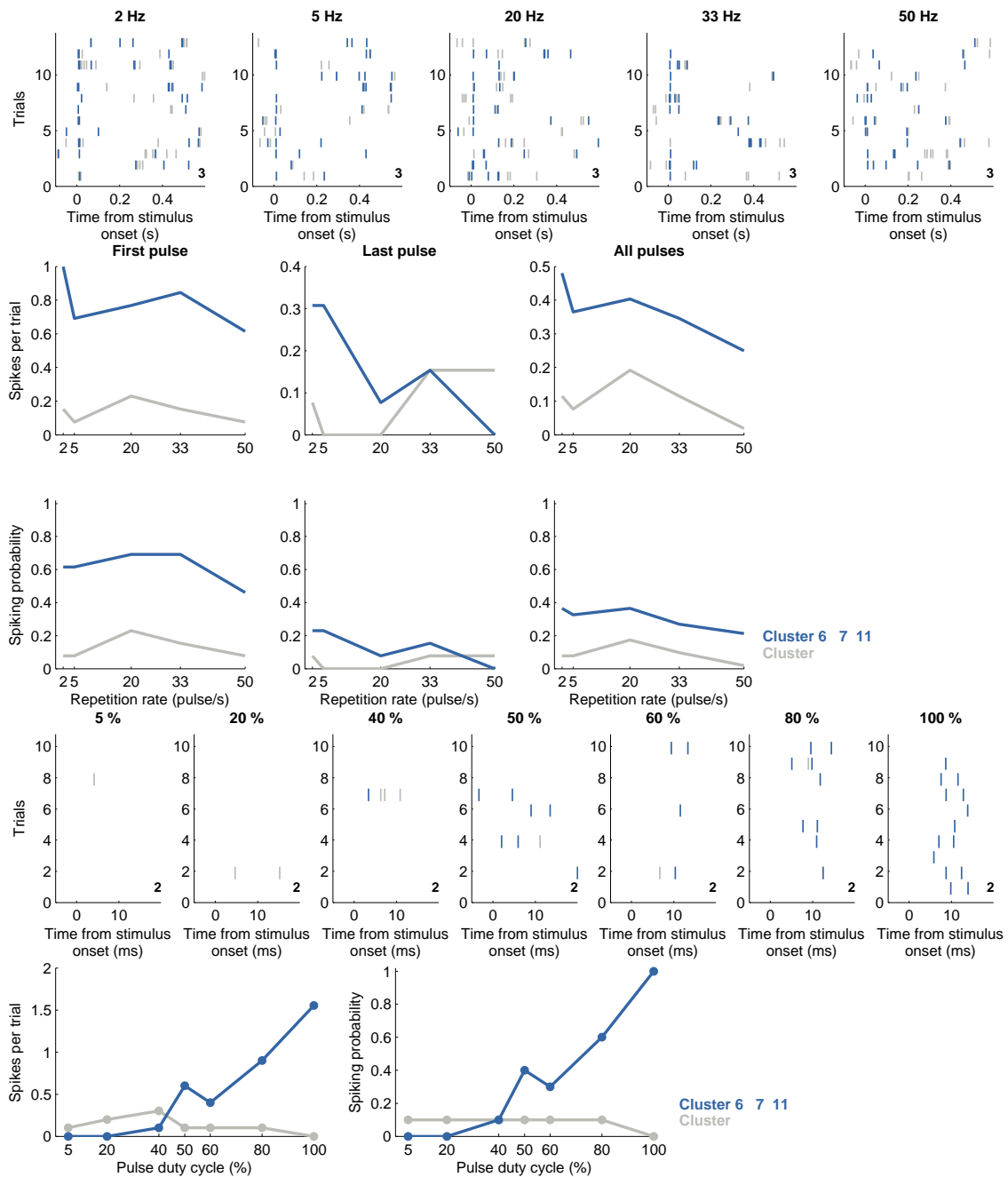
Notes: KlustaKwik clustering based on high-pass (900 Hz) filtered waveforms.

20080130-S185-004_summary_rasters.pdf



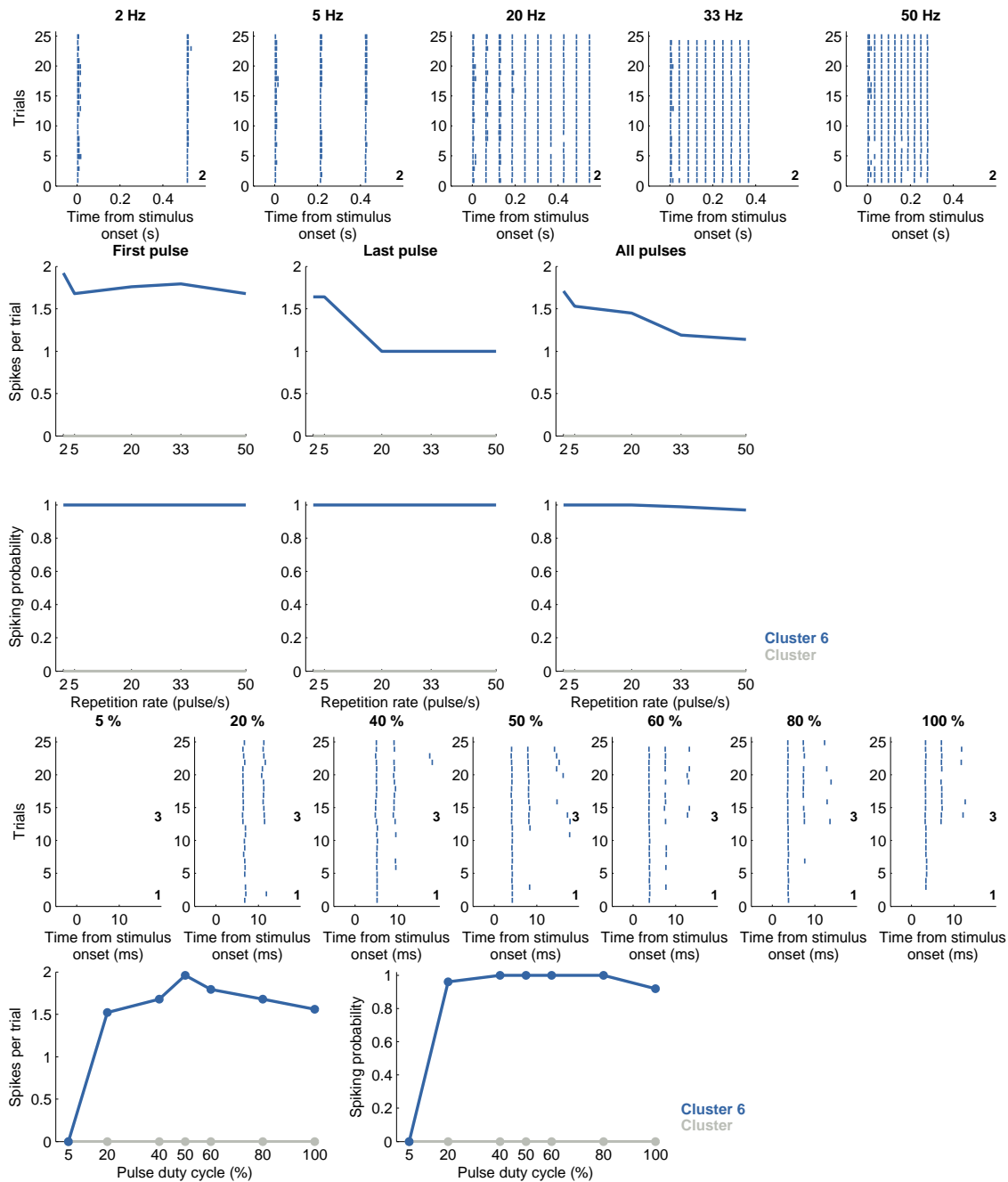
Notes: KlustaKwik clustering based on high-pass (900 Hz) filtered waveforms.

20080202-S186-001_summary_rasters.pdf



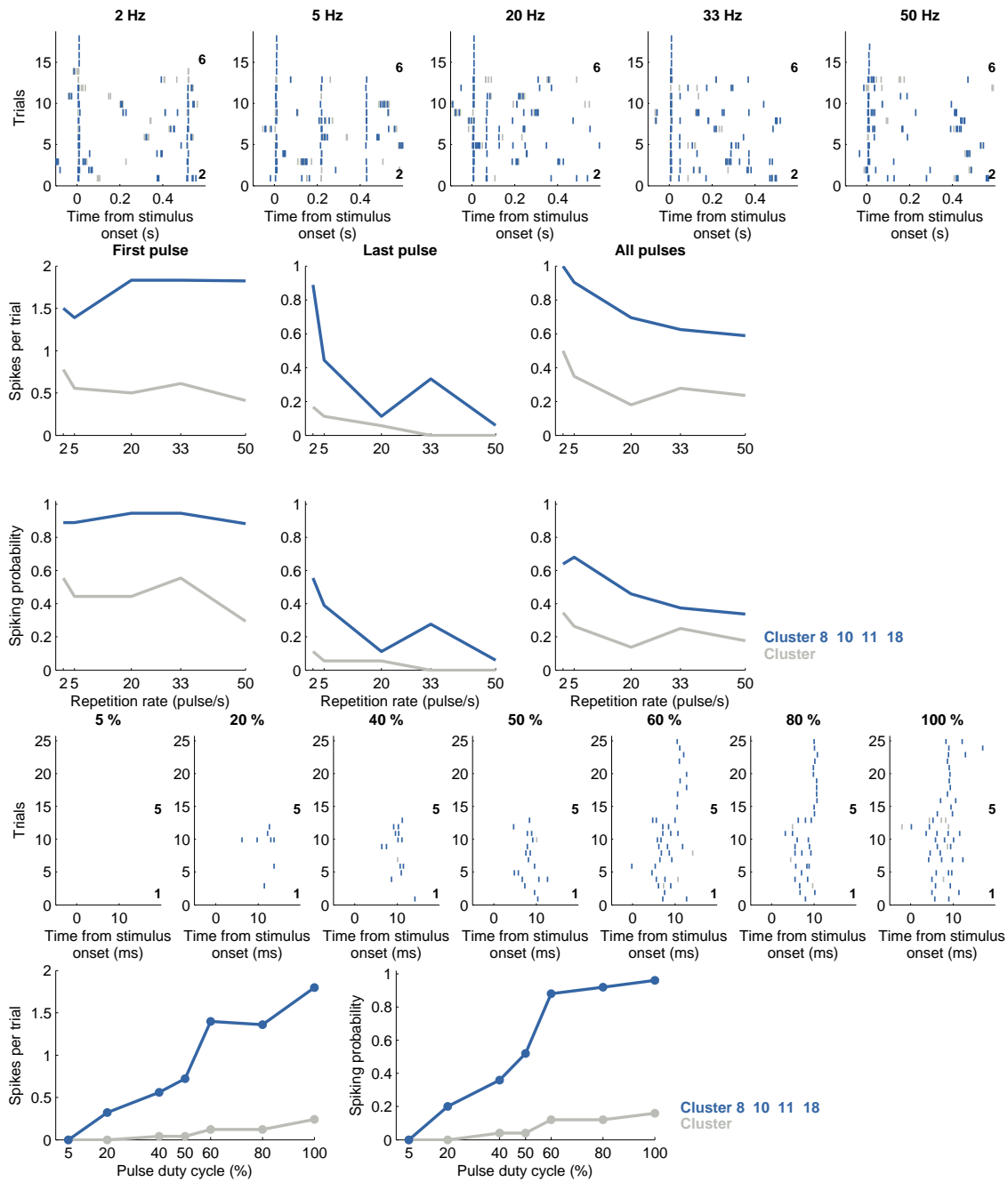
Notes: KlustaKwik clustering based on high-pass (900 Hz) filtered waveforms.

20080202-S186-002_summary_rasters.pdf



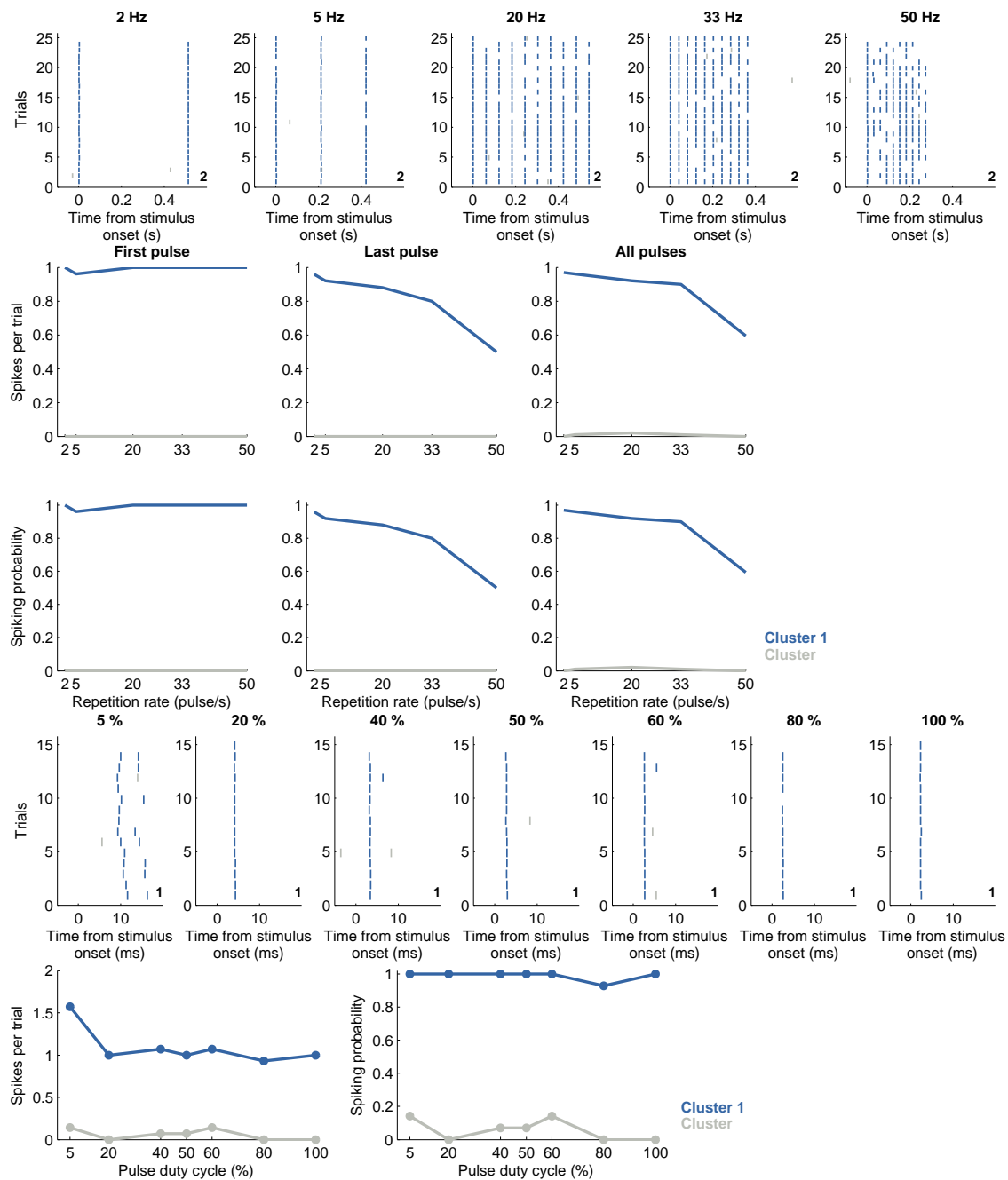
Notes: KlustaKwik clustering based on high-pass (900 Hz) filtered waveforms.

20080202-S186-003_summary_rasters.pdf



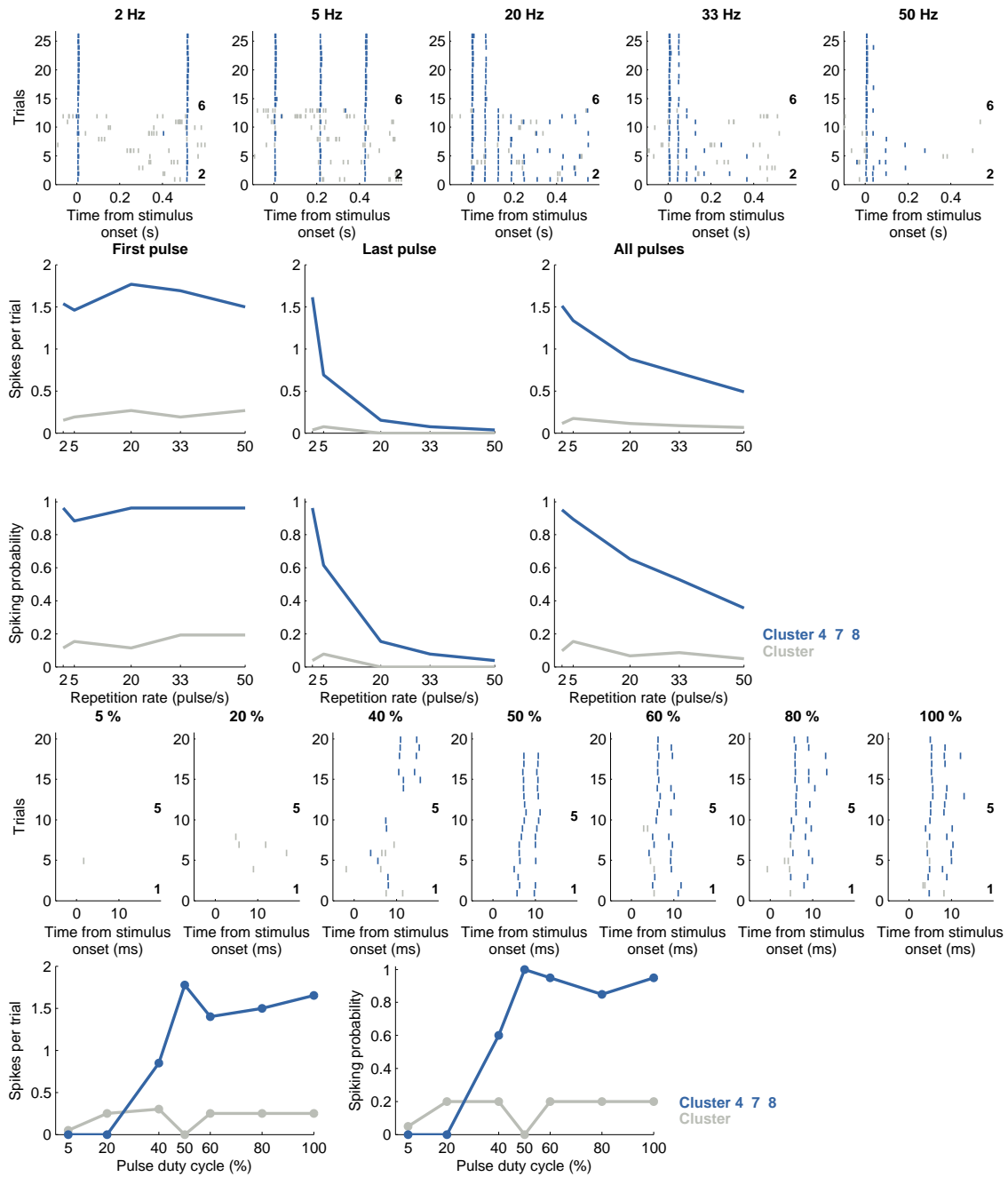
Notes: KlustaKwik clustering based on high-pass (900 Hz) filtered waveforms.

20080204-S187-001_summary_rasters.pdf



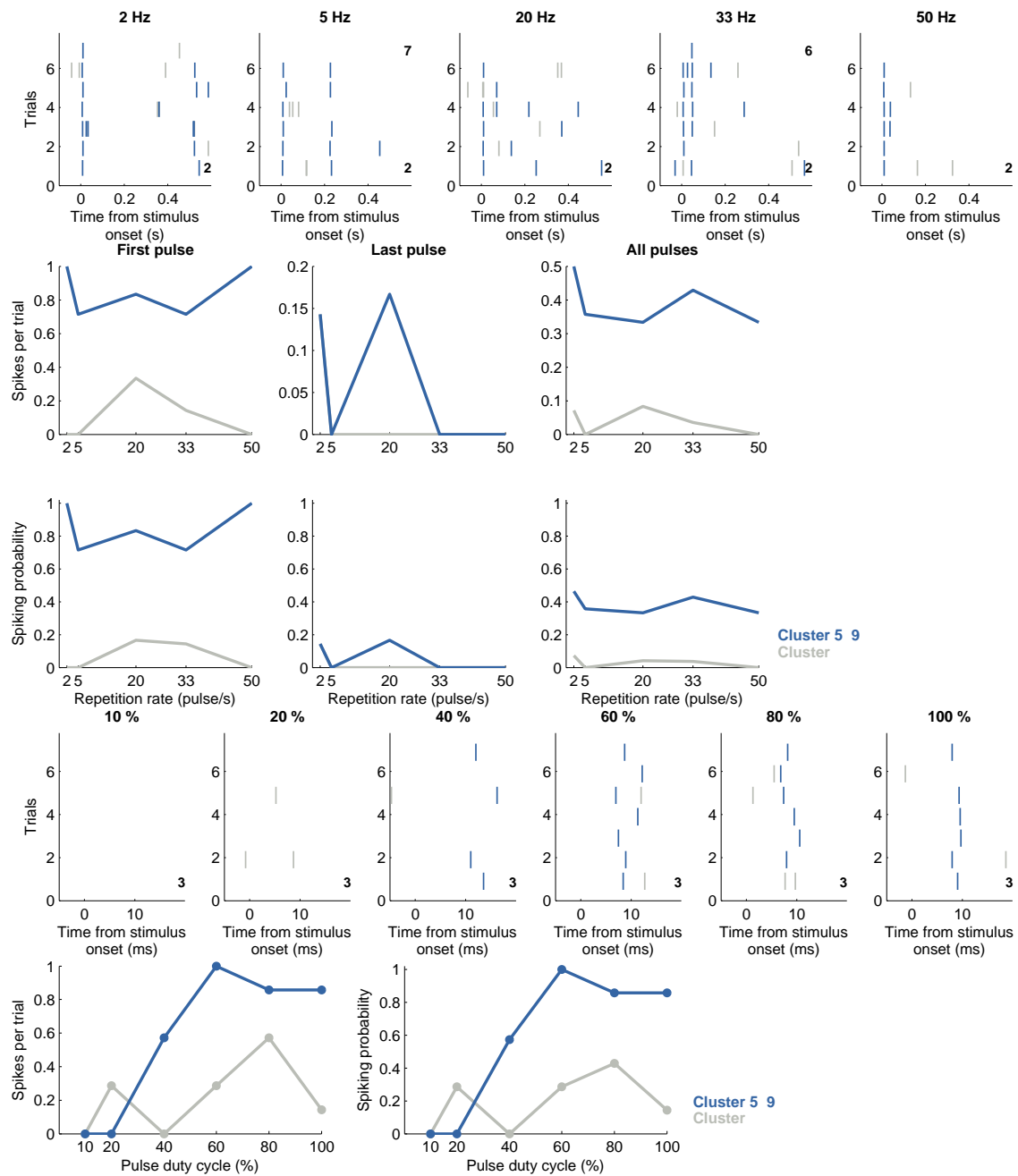
Notes: KlustaKwik clustering based on high-pass (900 Hz) filtered waveforms.

20080204-S187-002_summary_rasters.pdf



Notes: KlustaKwik clustering based on high-pass (900 Hz) filtered waveforms.

20080205-S188-001_summary_rasters.pdf



Notes: KlustaKwik clustering based on high-pass (900 Hz) filtered waveforms.

20080317-S204-002_summary_rasters.pdf